



State Transportation Board Meeting

October 17, 2024



- ☐ Invocation
- ☐ Pledge of Allegiance
- ☐ Roll Call
- ☐ Welcome Remarks
- ☐ Approval of Minutes





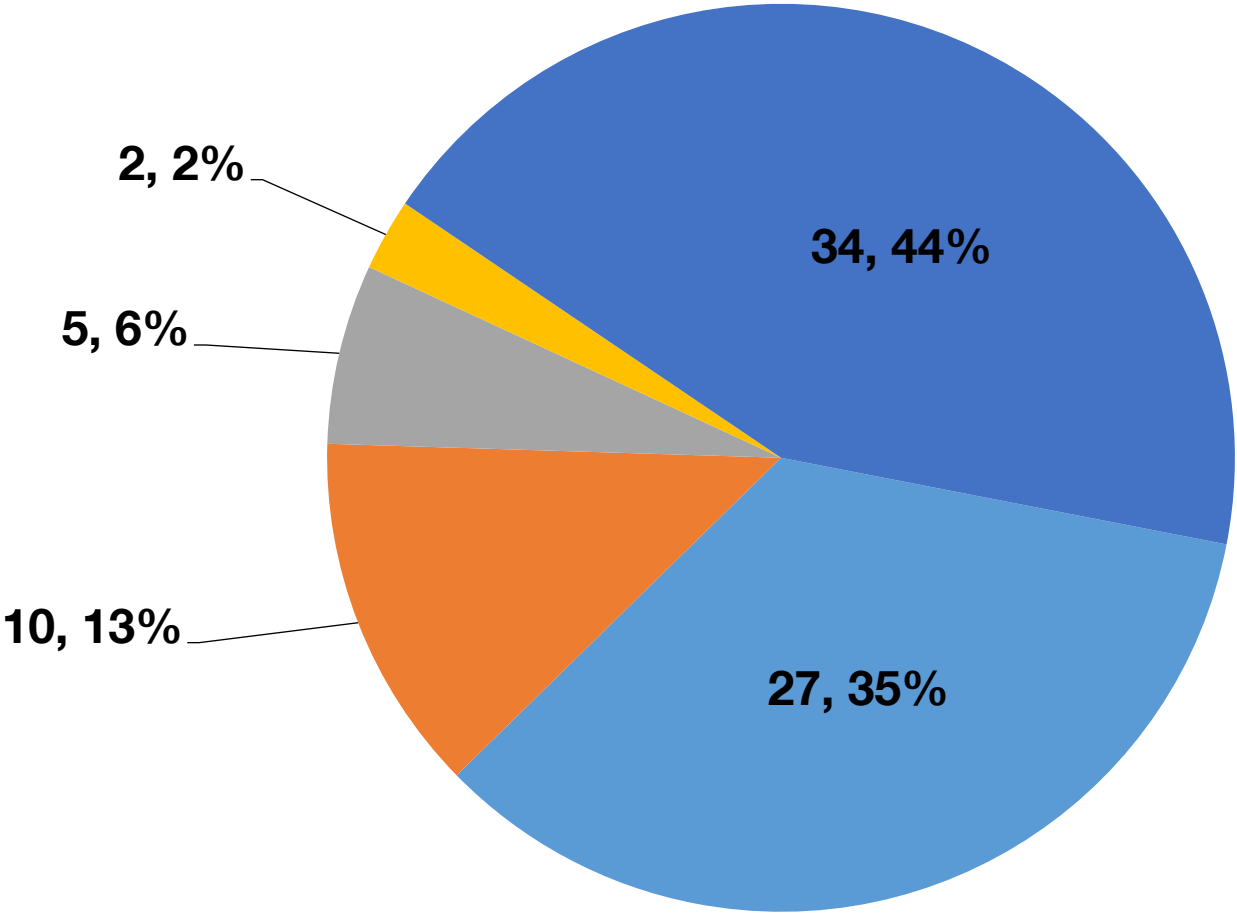
November 2024 Letting Report

Meg Pirkle, P.E.
Chief Engineer
October 17, 2024



Fiscal Year 2025 Letting Report

Number of Projects Let in FY 2025 (Contractor Low Bid Award Data)



Total = 78

GDOT & Local Lets

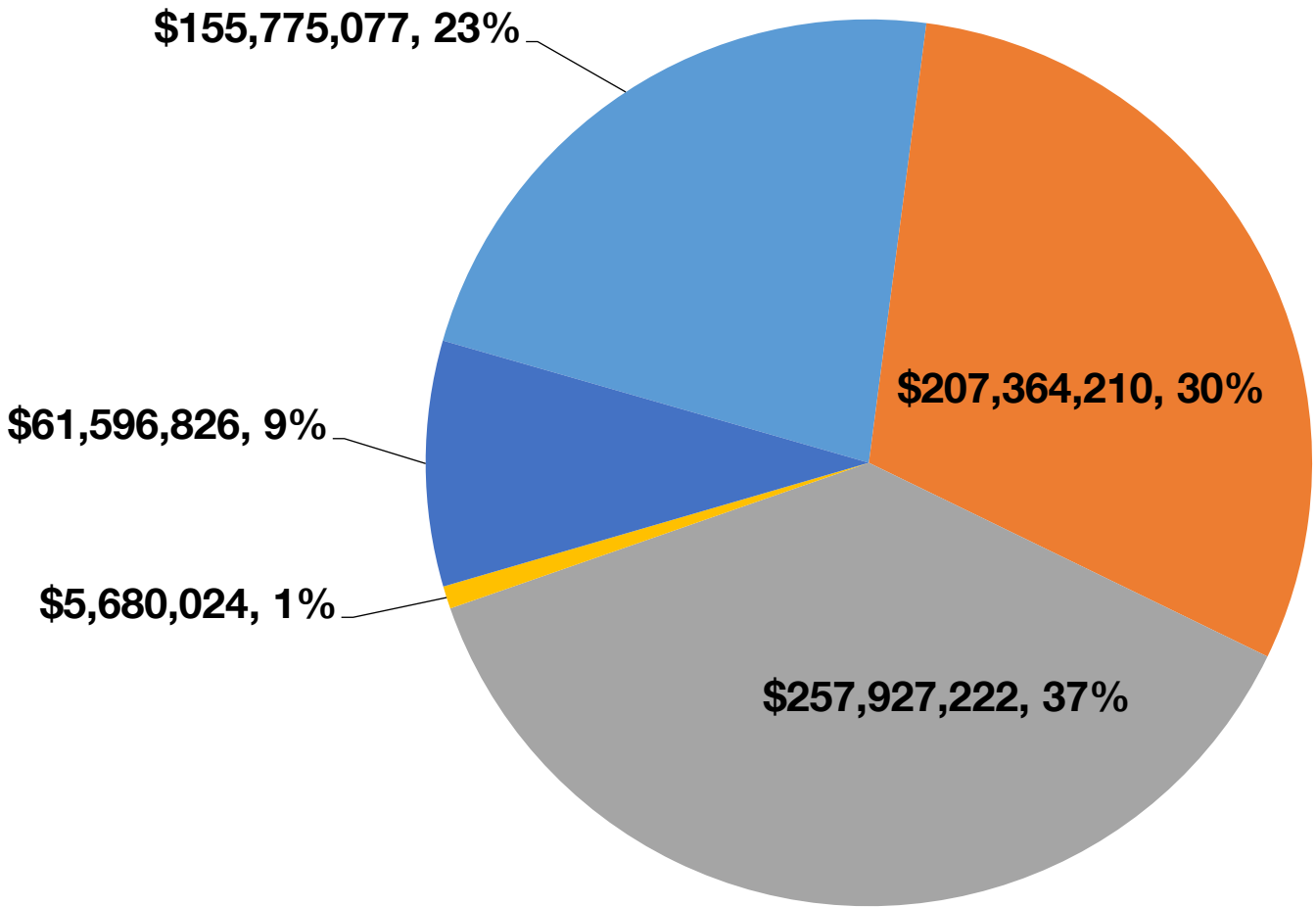
- Maintenance
- Bridges
- Roads
- Enhancements
- Safety

*As of October 6, 2024
Source Bidding Administration*

Fiscal Year 2025 Letting Report

Dollar Amount of Projects Let in FY 2025 (Contractor Low Bid Award Data)

GDOT & Local Lets



Total = \$688,343,359

As of October 6, 2024
Source Bidding Administration

September 2024 Letting Results

Summary	Presented to GDOT Board (Includes Adjustments)	Low Bid (Awarded to Contractor)	Low Bid w/Adjustments (Total Project Obligation)
GDOT Let (Project Count)	29	27	27
GDOT Let (Dollars)	\$266,084,025	\$234,119,323	\$243,448,283
Local Let (Project Count)	1	NA	NA
Local Let (Dollars)	\$4,994,981	NA	NA

6

*Low Bid Award Amount includes the Deferred and Awarded projects.

Does not include Engineering and Inspection, Utilities, Liquid AC, Incentives, LMIG and Rejected projects.

GDOT Let Projects

November 2024 Letting

GDOT Let Projects November 2024 Letting

Project ID	Description	Primary County	Primary Work Type	Congressional District	Project Let By	Project Sponsor
M006568	I-95 FROM LITTLE SATILLA RIVER TO SR 27	Glynn	Resurface & Maintenance	001	DOT	GDOT
0019226	OFF-SYSTEM SAFETY IMPROVEMENTS @ 5 LOCS IN MUSCOGEE COUNTY	Muscogee	Signing	002	DOT	GDOT
0020014	SIGNING & MARKING @ 48 HAL LOCS & 6 CIRR LOCS IN DISTRICT 4	Early	RRX Signing & Marking	002	DOT	GDOT
M006501	SR 11 FROM HOUSTON RD/HOUSTON TO S OF LIBERTY CHURCH RD/BIBB	Bibb	Concrete Rehab	002	DOT	GDOT
M005283	SR 109 FROM TROUP COUNTY LINE TO SR 100 SO	Meriwether	Resurface & Maintenance	003	DOT	GDOT
0019239	OFF-SYSTEM SAFETY IMPROVEMENTS @ 7 LOCS IN DOUGLAS COUNTY	Douglas	Pavement Markings	003, 013	DOT	GDOT
0013810	SR 14 @ BELTLINE WESTSIDE TRAIL	Fulton	Bridges	005	DOT	GDOT
M006464	SR 13 FROM SR 9 TO NORTH FORK PEACHTREE CREEK	Fulton	Resurface & Maintenance	005	DOT	GDOT
0002862	SR 20 FROM SR 369/CHEROKEE TO POST ROAD/FORSYTH	Cherokee	Widening	006	DOT	GDOT
0017430	ASHFORD-DUNWOODY ROAD EB RAMP @ I-285	DeKalb	Operational Improvement	006	DOT	Perimeter CID - DeKalb
0017999	S NORCROSS-TUCKER RD/SINGLETON RD/STEVE REYNOLDS BLVD@1LOC	Gwinnett	ITS	007	LOC	Gwinnett County

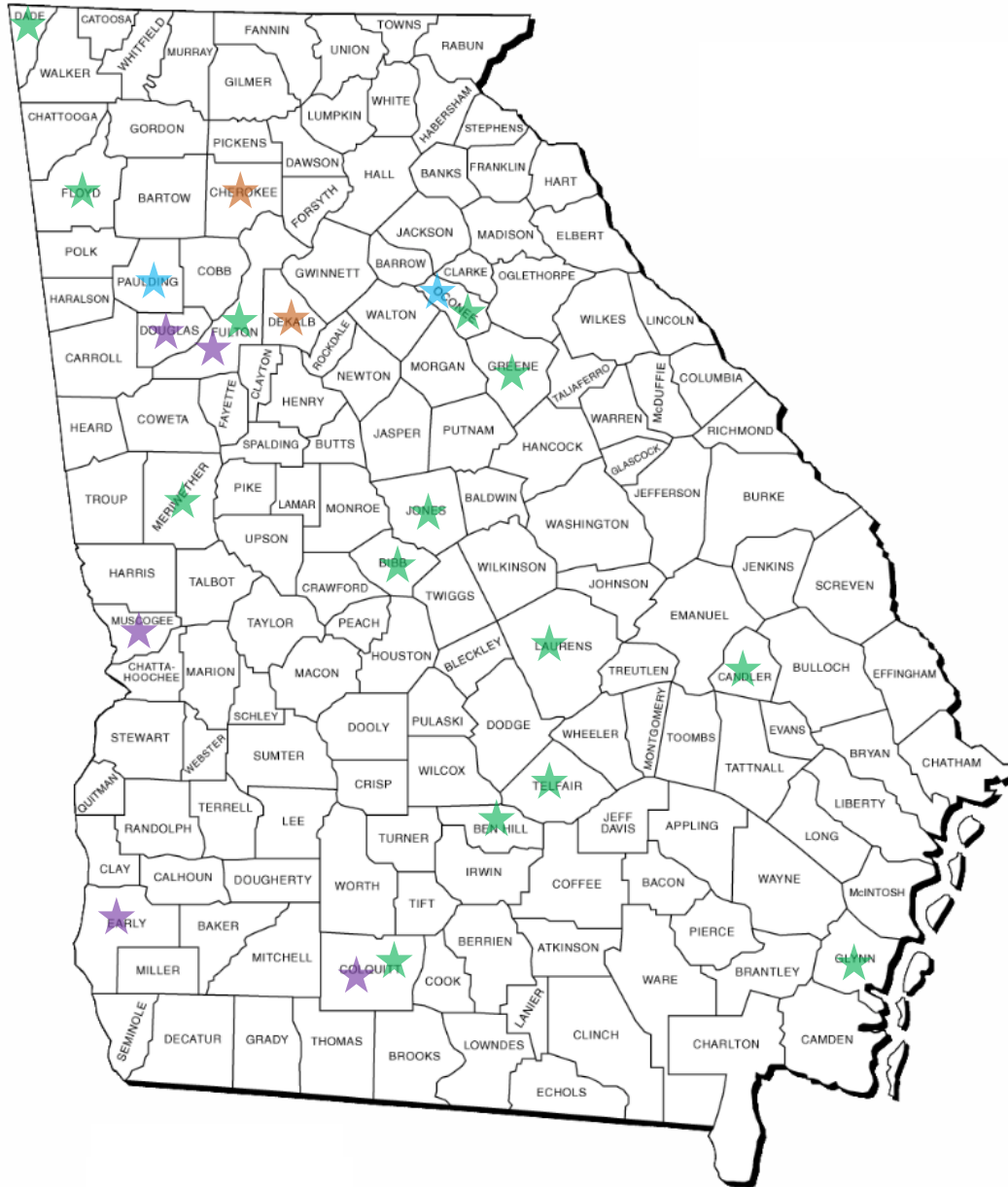
GDOT Let Projects November 2024 Letting

Project ID	Description	Primary County	Primary Work Type	Congressional District	Project Let By	Project Sponsor
0019228	MILLPOND RD & TALLOKAS RD - OFF-SYSTEM SAFETY IMPROVEMENTS	Colquitt	Rumble Strips	008	DOT	GDOT
M006420	SR 19 & SR 27 FM S OF CR 267/TOM HALEY RD TO OCMULGEE RIVER	Telfair	Resurface & Maintenance	008	DOT	GDOT
M006504	SR 18 FROM SR 11/SR 22 TO JAMES STREET	Jones	Resurface & Maintenance	008	DOT	GDOT
M006547	SR 182 FROM SR 11 TO SR 107	Ben Hill	Resurface & Maintenance	008	DOT	GDOT
M006664	MILL POND ROAD FM FUNSTON SALE CITY ROAD TO OLD DOERUN ROAD	Colquitt	Resurface & Maintenance	008	DOT	GDOT
0013767	SR 8/SR 316/US 29 @ CR 55/JIMMY DANIEL ROAD	Oconee	Interchange	010	DB	GDOT
M005599	SR 15 FROM SR 77 TO SR 12	Greene	Resurface & Maintenance	010	DOT	GDOT
M005881	SR 10/US 78 FROM WALTON COUNTY LINE TO SR 8	Oconee	Resurface & Maintenance	010	DOT	GDOT
M006405	SR 199 FROM S OF I-16 TO SR 29	Laurens	Resurface & Maintenance	012	DOT	GDOT
M006418	SR 129 FROM TATTNALL COUNTY LINE TO SR 46	Candler	Resurface & Maintenance	012	DOT	GDOT
0019243	OFF-SYSTEM SAFETY IMPROVEMENTS @ 15 LOCS IN SOUTH FULTON	Fulton	Pavement Markings	013	DOT	GDOT

GDOT Let Projects November 2024 Letting

Project ID	Description	Primary County	Primary Work Type	Congressional District	Project Let By	Project Sponsor
M006475	I-85 @ 4 LOCS IN FULTON - BRIDGE PRESERVATION	Fulton	Bridges	013	DOT	GDOT
0015604	CR 591/MORNINGSIDE DR @ MILL CREEK/LICK LOG CREEK S OF HIRAM	Paulding	Bridges	014	DOT	GDOT
M006166	I-24 FROM TENNESSEE STATE LINE TO TENNESSEE STATE LINE	Dade	Resurface & Maintenance	014	DOT	GDOT
M006477	SR 156 FROM SR 1 TO GORDON COUNTY LINE	Floyd	Resurface & Maintenance	014	DOT	GDOT

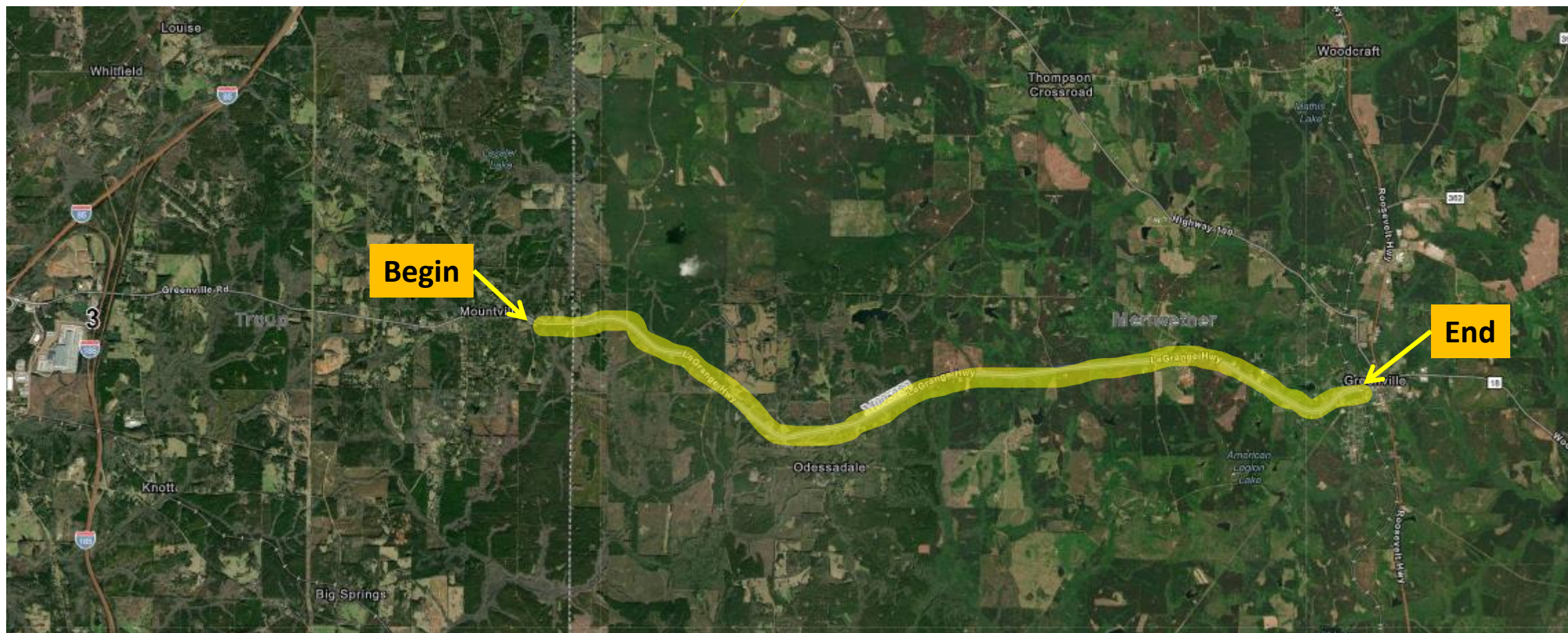
November 2024 Projects Throughout Georgia



I-95 FROM LITTLE SATILLA RIVER TO SR 27 Resurfacing Project in Glynn County Congressional District 1



SR 109 FROM TROUP COUNTY LINE TO SR 100 SO Resurfacing Project in Meriwether County Congressional District 3

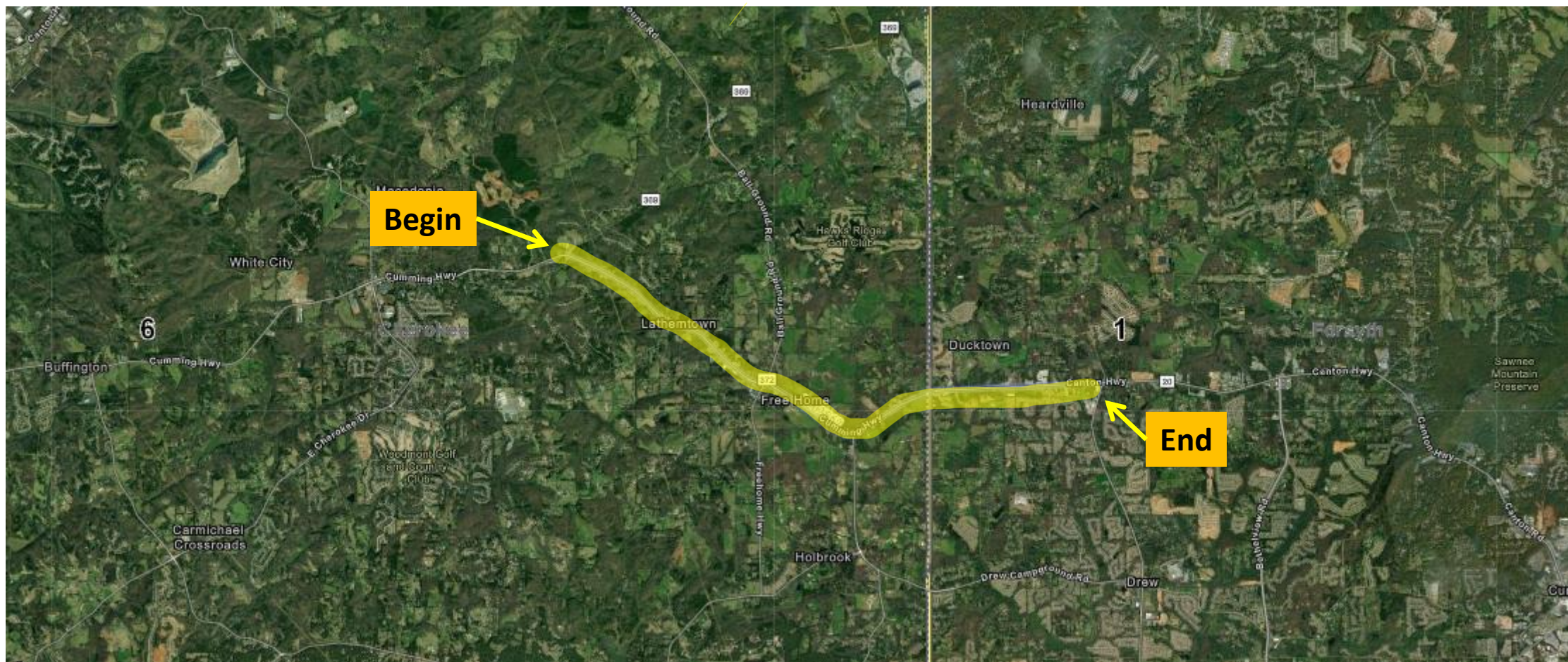




SR 14 @ BELTLINE WESTSIDE TRAIL Bridge Rehabilitation Project in Fulton County Congressional District 5 (Continued)



SR 20 FROM SR 369/CHEROKEE TO POST ROAD/FORSYTH Widening Project in Cherokee County Congressional District 6



SR 10/US 78 FROM WALTON COUNTY LINE TO SR 8 Resurfacing Project in Oconee County Congressional District 10



CR 591/MORNINGSIDE DR @ MILL CREEK/LICK LOG CREEK S OF HIRAM

Bridge Replacement Project in Paulding County

Congressional District 14

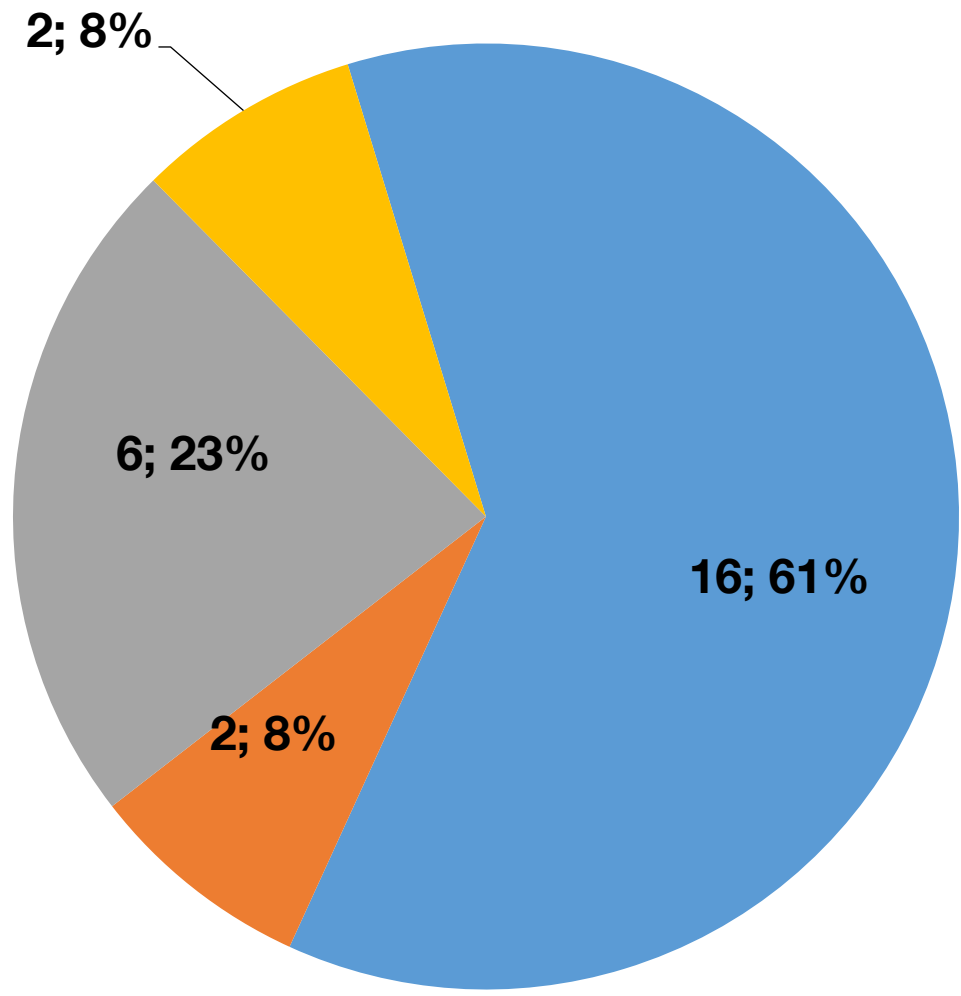


CR 591/MORNINGSIDE DR @ MILL CREEK/LICK LOG CREEK S OF HIRAM Bridge Replacement Project in Paulding County Congressional District 14 (Continued)



Fiscal Year 2025 Letting Report

Number of Projects
November 2024 Letting



GDOT Lets

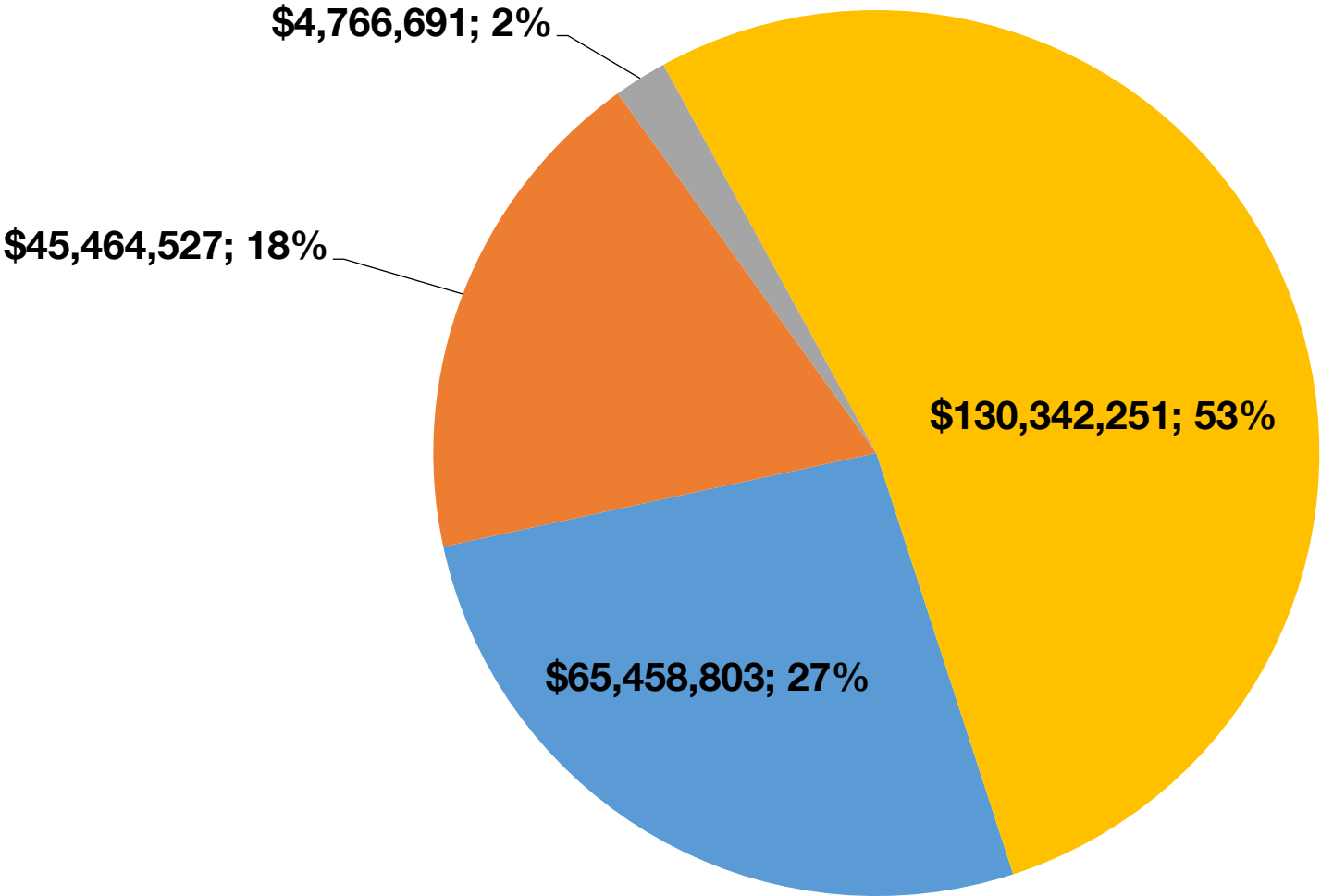


Total = 26

Fiscal Year 2025 Letting Report

Dollar Amount of Projects

November 2024 Letting



GDOT Lets



Total = \$246,032,273

For Board Action & Review

Proposed Revisions to the Construction Work Program

Matt Markham

Deputy Director of Planning

October 17, 2024

October 2024 CWP Board Revision For Board Action

Project ID	Description	County	Congressional District	Primary Work Type	Action
0020770	SR 307 @ SR 21 & @ CSX 632473Y	Chatham	001	Grade Separation	Addition to the Program
0020768	SR 91 @ CHATTAHOOCHEE RIVER	Seminole	002	Bridges	Addition to the Program
0019266	SR 10 LOOP SB & NB @ CSX RAILROAD 1.3 MI S OF ATHENS	Clarke	010	Bridges	Deletion from the Program
0019267	SR 10 LOOP SB & NB @ CSX #938042F 1.5 MI NW OF ATHENS	Clarke	010	Bridges	Deletion from the Program

November 2024 CWP Board Revision For Board Review

Project ID	Description	County	Congressional District	Primary Work Type	Action
0017724	SR 66 @ YOUNG HARRIS BYPASS	Towns	009	Roundabout	Deletion to the Program
0019273	I-520 @ SR 10	Richmond	012	Bridges	Deletion to the Program



Savannah Area Project Updates

Trevor Brown

P3 Post-Let Design-Build Asst. Admin.

October 17, 2024

Meg Pirkle, P.E.

Chief Engineer

October 17, 2024



P3 Division Update: Southeast Georgia Design-Build Projects

Trevor Brown
October 17, 2024



16@95 Improvement Projects (P.I. 0012757 & P.I. 0012758)

Project Overview

- Provides enhancements to the I-16 at I-95 Interchange and along the I-16 corridor
- One of Georgia's busiest freight corridors as well as the gateway to the growing Port of Savannah

Recent Activities

- Widening within the I-16 median and outside shoulder reconstruction
- Reconstruction of the I-95 overpass bridge
- Bridge construction within the I-16/I-516 Interchange



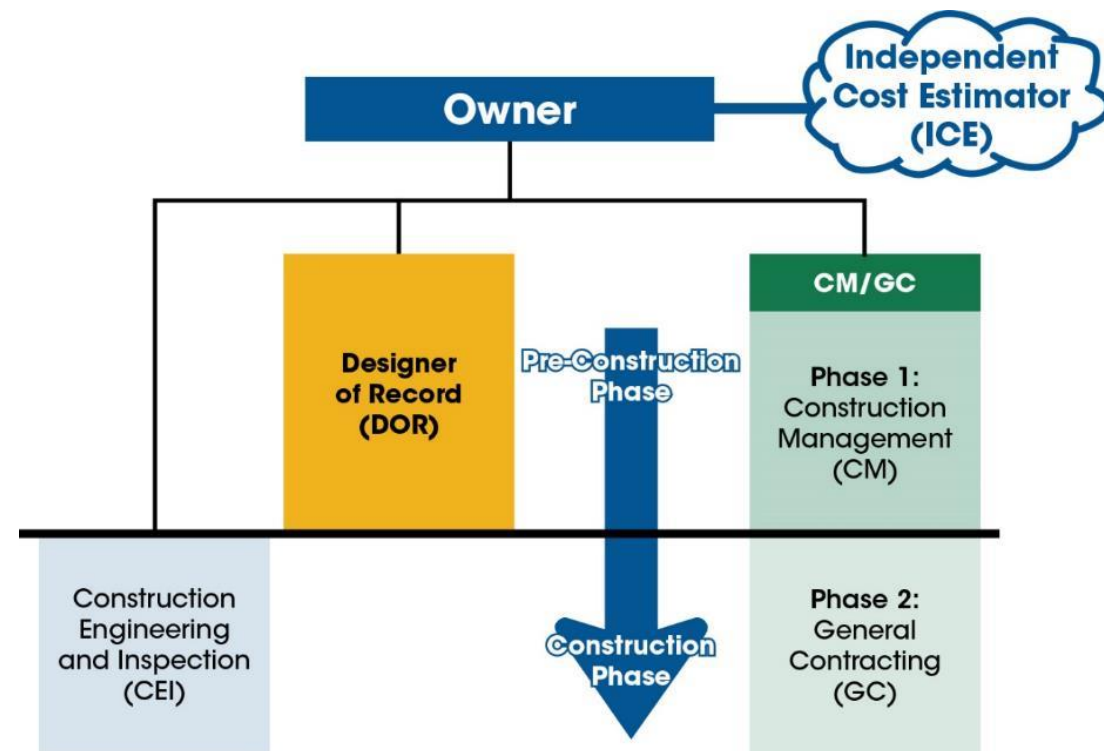
2020
Construction Start



Mid 2025
Anticipated
Substantial Completion



US 17/SR 404 Spur Bridge Major Maintenance Project (P.I. 0019219)



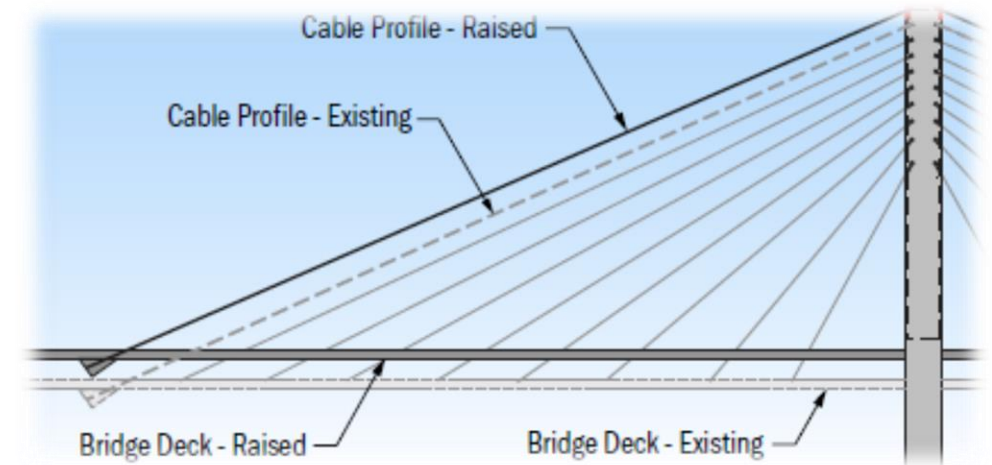
US 17/SR 404 Spur Bridge Major Maintenance Project (P.I. 0019219)

Project Overview

- Construction Manager/General Contractor (CM/GC) contract was awarded in Q4 2023. First of its kind in Georgia.
- Replace the existing cables
- Raise the profile of the bridge to accommodate access for larger shipping vessels

Recent Status

- Construction of median glare screen to begin in October 2024
- Design is underway for cable replacement and bridge raising
- Anticipated Start for cable replacement: Late 2025/ Early 2026



Questions?

Trevor Brown

trbrown@dot.ga.gov

912-424-9242

Savannah River Crossing

SR 404 Spur/US 17



P.I. No. 0017183

Meg Pirkle, P.E., Chief Engineer

October 17, 2024

Bridge and Port Statistics

Existing Bridge



- Built in 1991; 100-year 'service life'
- 185-foot vertical clearance
- Up to ~15,000 TEU vessels
 - Largest vessels typically call with reduced load at low tide

Port of Savannah



- Fastest-growing container port in the U.S.
- Moved 5.8M TEUs in FY22; 7.1% average annual growth over past decade
- Monthly record set in October 2022, growing TEUs by 9.6%*

SHEP



- Deepening harbor, improving operational efficiency of larger vessels
- Will save \$327M yearly in transportation costs
- Completed in 2022

*State of the Port, July 2023 <https://gaports.com/wp-content/uploads/2023/08/Monthly-TEU-Throughput-July-2023.pdf?1693237486>

Existing Condition

- Increasing global vessel size due to economies of scale (15,000+ TEU)
- Navigational clearance poses operational challenge

- **Examples of clearance limitations:**

Port of Savannah (US 404 Spur /US 17 Bridge)

185 ft.

Port of NY/NJ (Bayonne Bridge)

215 ft.

Port of Charleston/N. Charleston Terminal
(Ravenel/Don Holt Bridges)

186 ft./155 ft.

Port of Virginia (Norfolk)

N/A (tunnel)

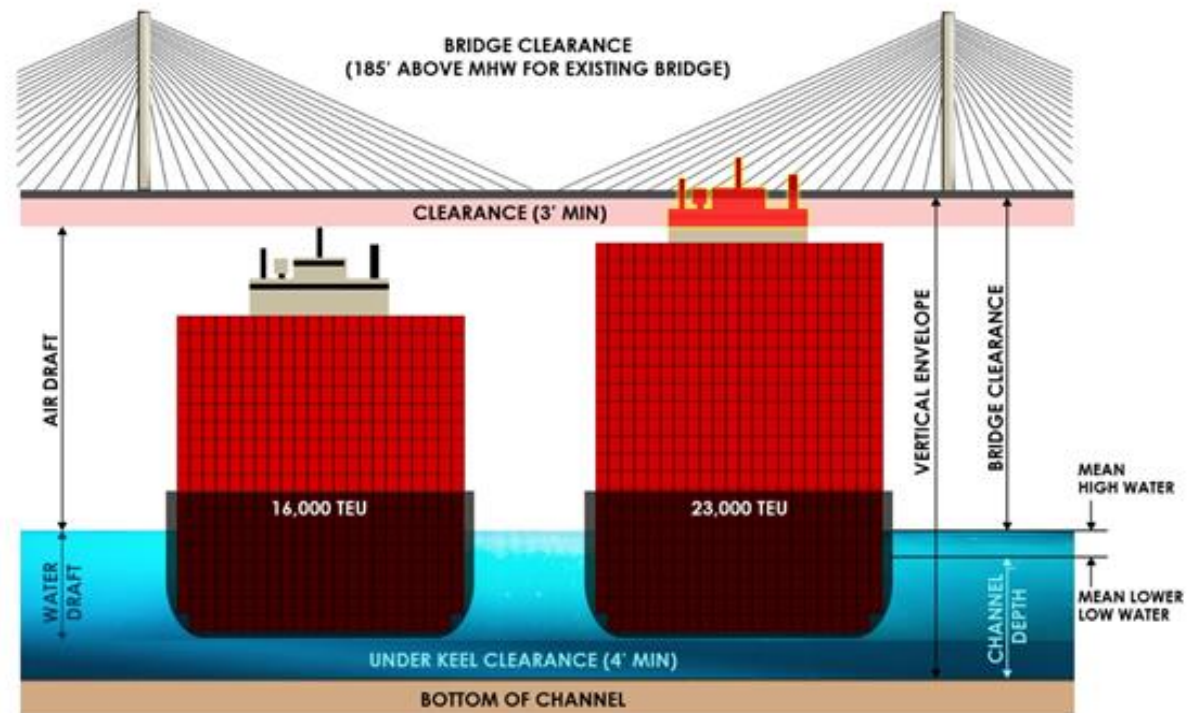
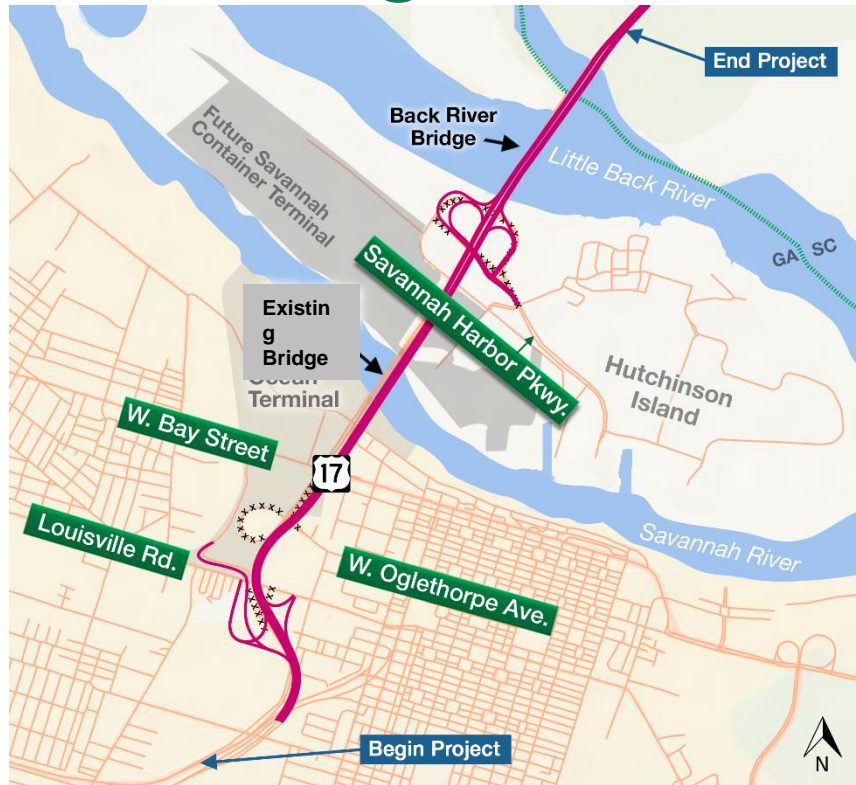


Figure not to scale, for illustrative purposes

New Bridge – Same Location



Description

New bridge adjacent to existing bridge
Will carry 4 lanes of traffic
Will impact Back River Bridge
Maintain traffic during construction

Implementation Timeframe*

9 – 11 years

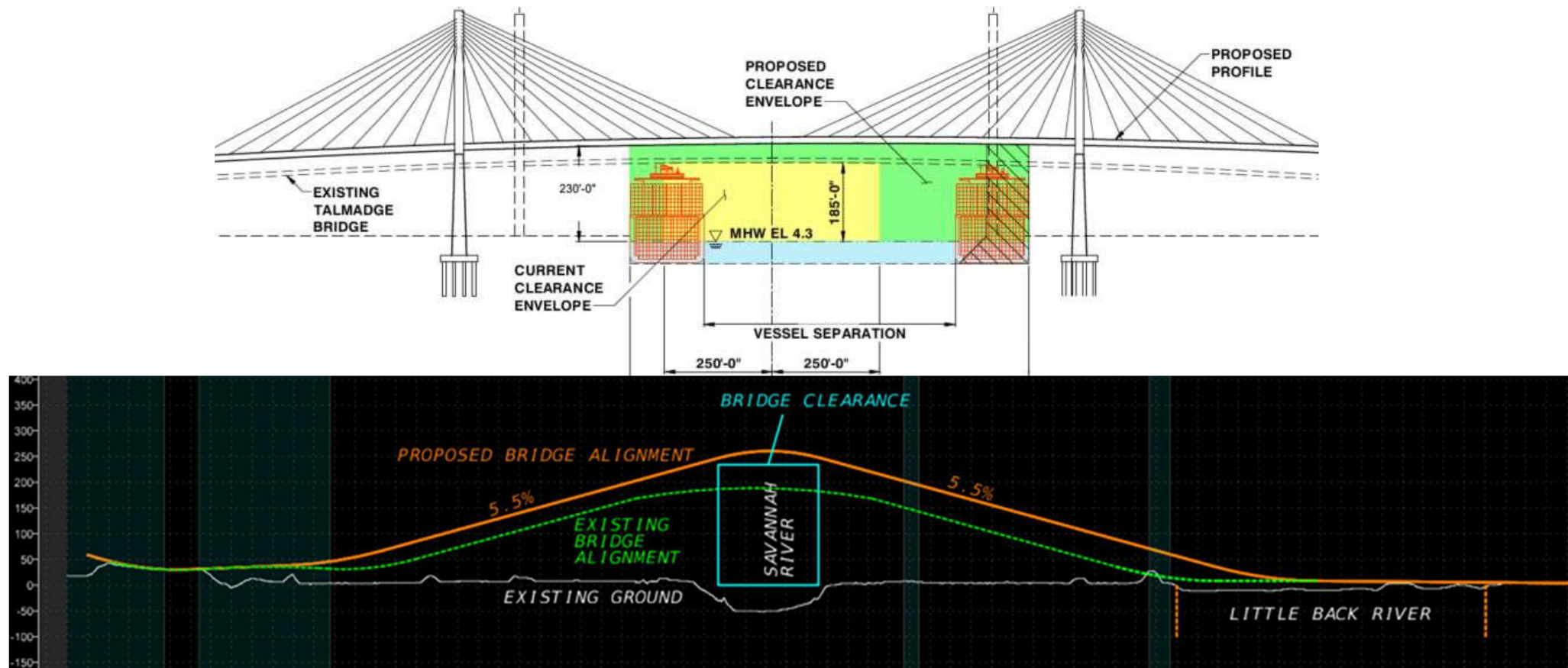
Potential Future Changes/Refinements

Adjust alignment/grade/tie-ins
Evaluate pier & straddle bent placement
Identify strategies to manage traffic volume growth
Right-of-way limits (undetermined at this time)

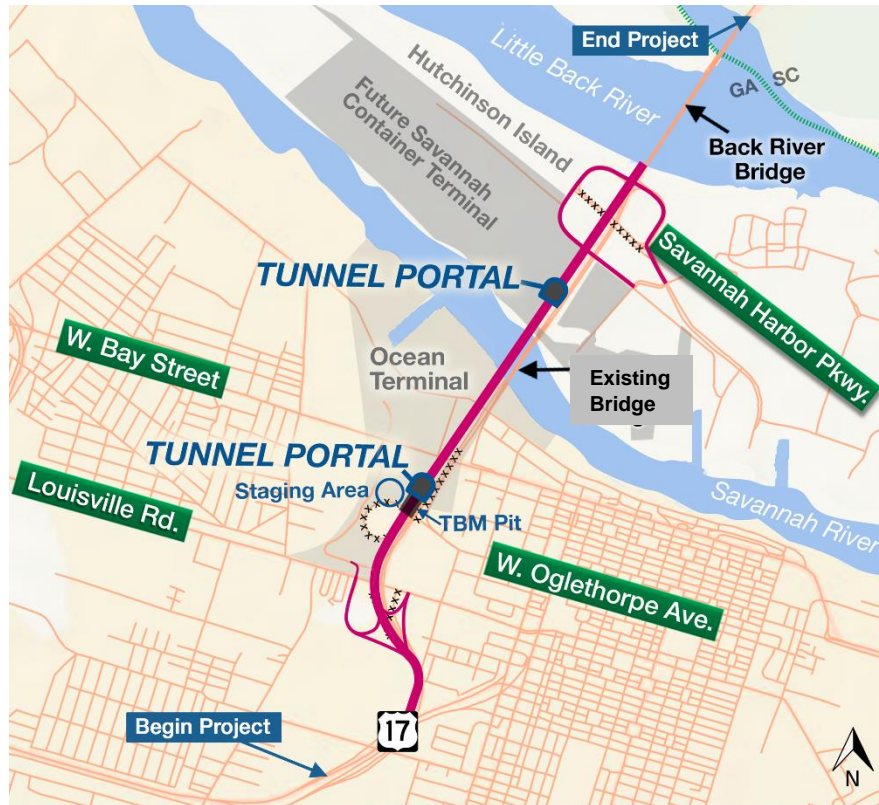
Notes:

* Implementation timeframe begins upon allocation of federal construction funding.

Replacement Bridge Concept



Tunnel Alternative

**Notes:**

* Implementation timeframe begins upon allocation of federal construction funding.

Description

Bored tunnel under the Savannah River
Two parallel bores each with two lanes of traffic
Maintain traffic during construction
Eliminates future clearance concerns

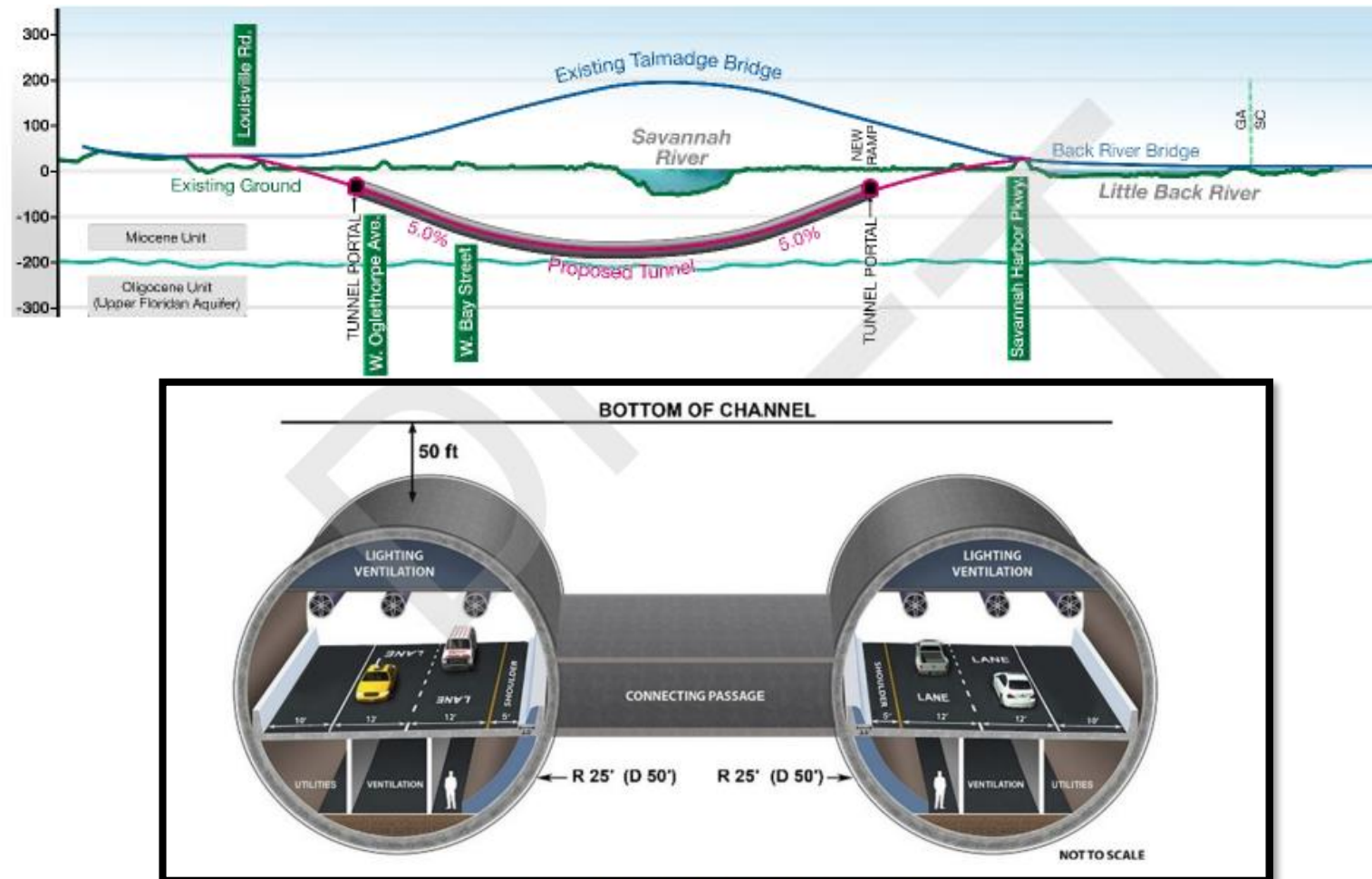
Implementation Timeframe*

9 – 11 years

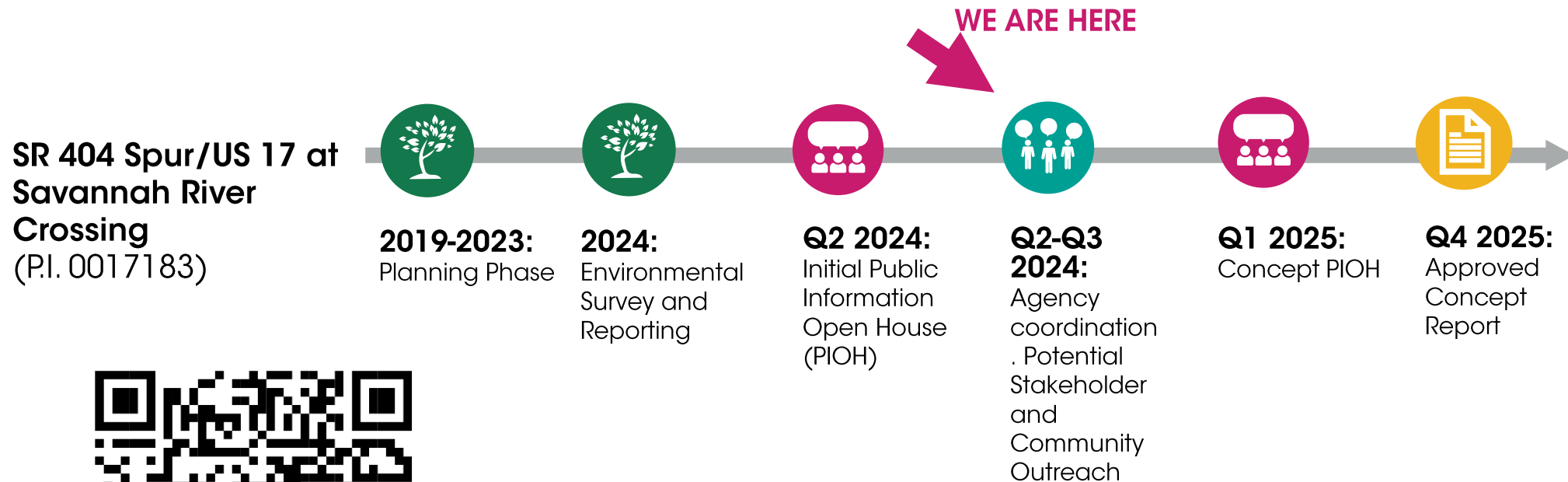
Potential Future Changes/Refinements

Adjust portal locations
Adjust tunnel depth/grade/length/tie-ins
Identify Operations Building Location
Identify strategies to manage traffic volume growth
Right-of-way limits (undetermined at this time)

Tunnel Option



Ultimate Solution Concept - Schedule



Link to Project Webpage

Upcoming Activities

- Traffic Crash Rate Analysis and Future Traffic Volume development
- Evaluation of ramp configurations
- Concept Report Development
- Revisit LCP/PAR Process

Questions?





Commissioner's Report to the State Transportation Board

Russell R. McMurry, P.E.

Commissioner

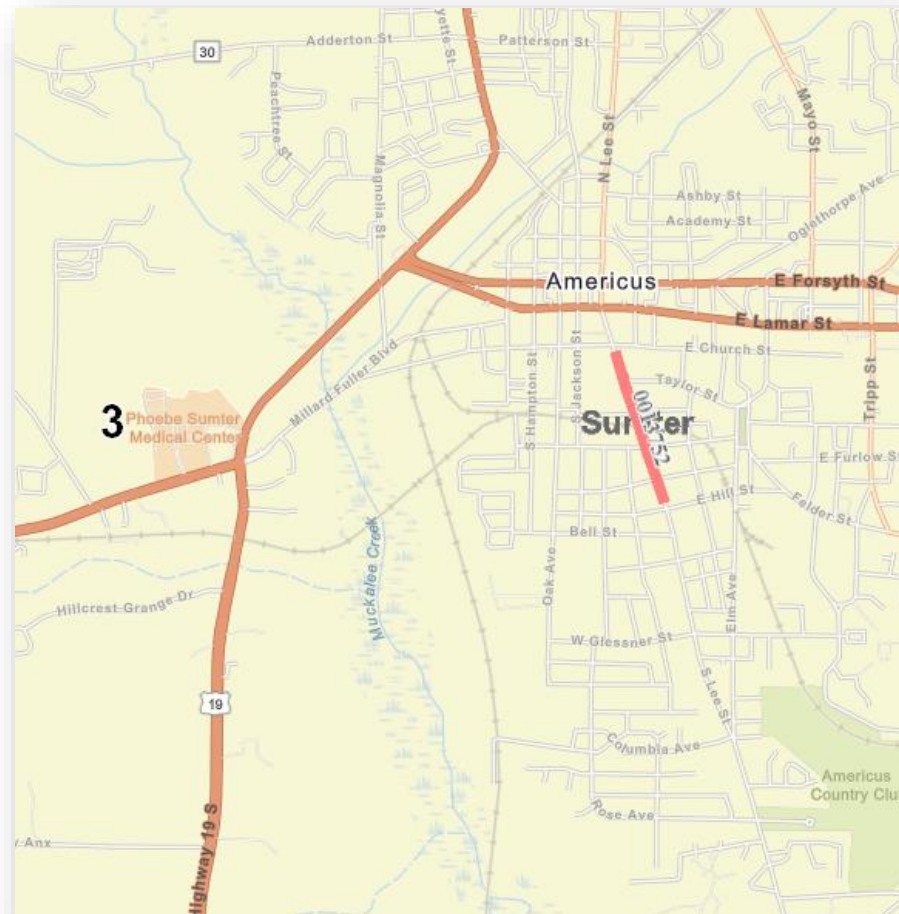
October 17, 2024

Commissioner's Update: September 2024 Data

- ☐ Transportation Fund Collections
- ☐ Employment Data
- ☐ Professional Services Procurement Update
- ☐ Highlights of Projects Open to Traffic

Bridge Replacement – 0013752

on SR 377/South Lee Street in Sumter County



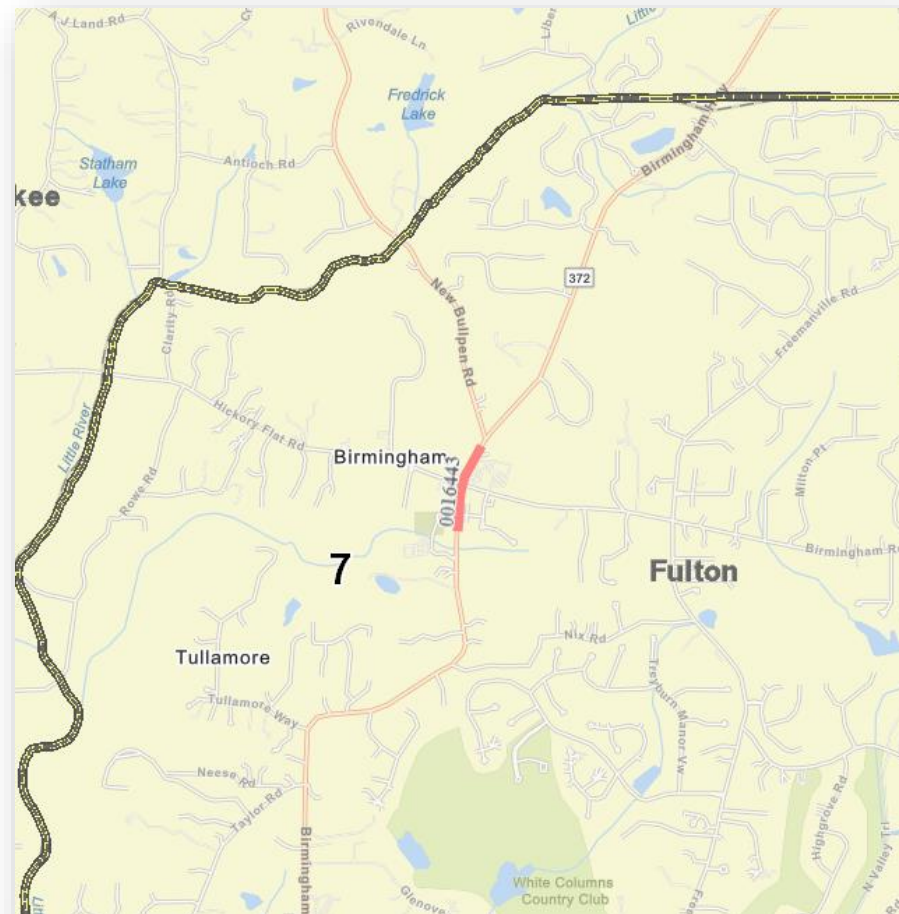
Bridge Replacement – 0013752

on SR 377/South Lee Street in Sumter County



Construction of a roundabout – 0016443

at the intersection of SR 372 and Birmingham Road in Fulton County



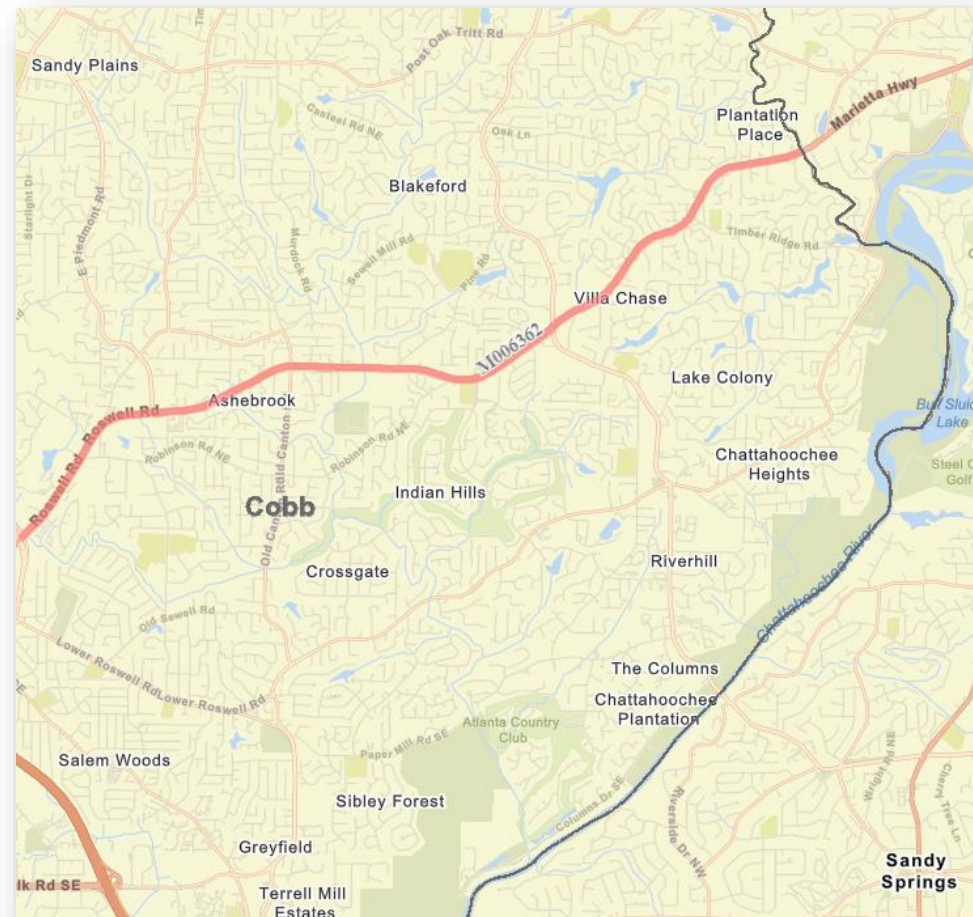
Construction of a roundabout – 0016443

at the intersection of SR 372 and Birmingham Road in Fulton County



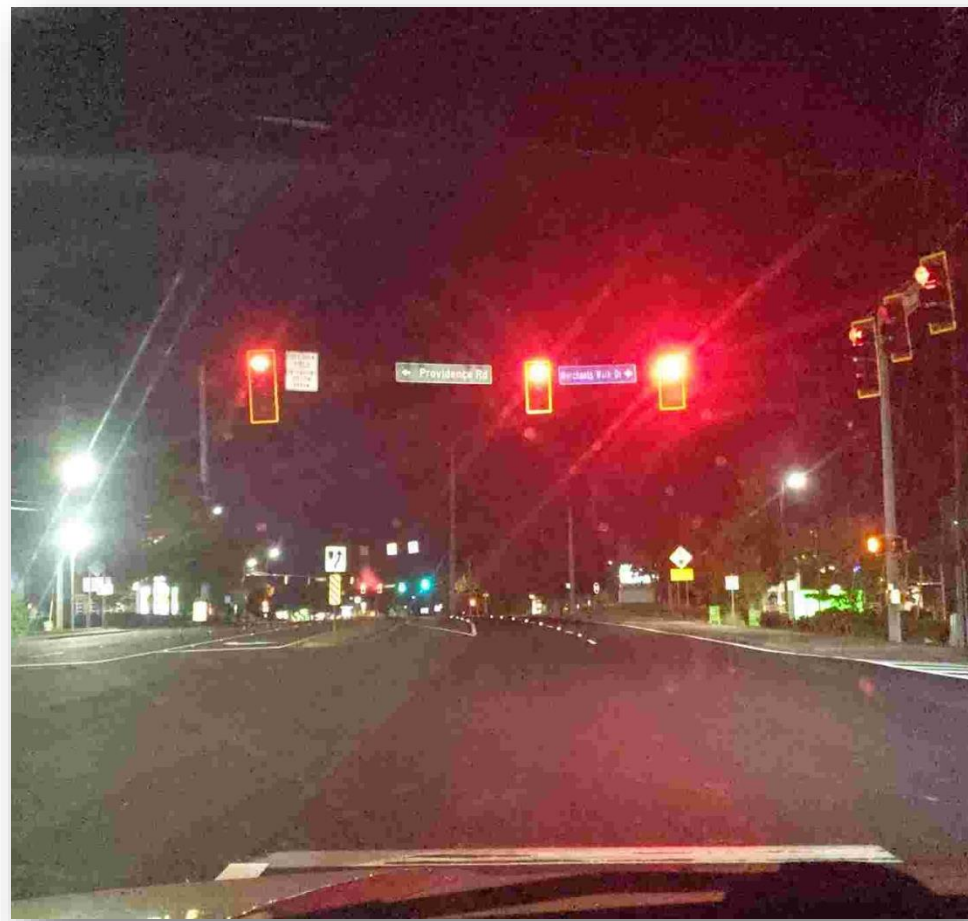
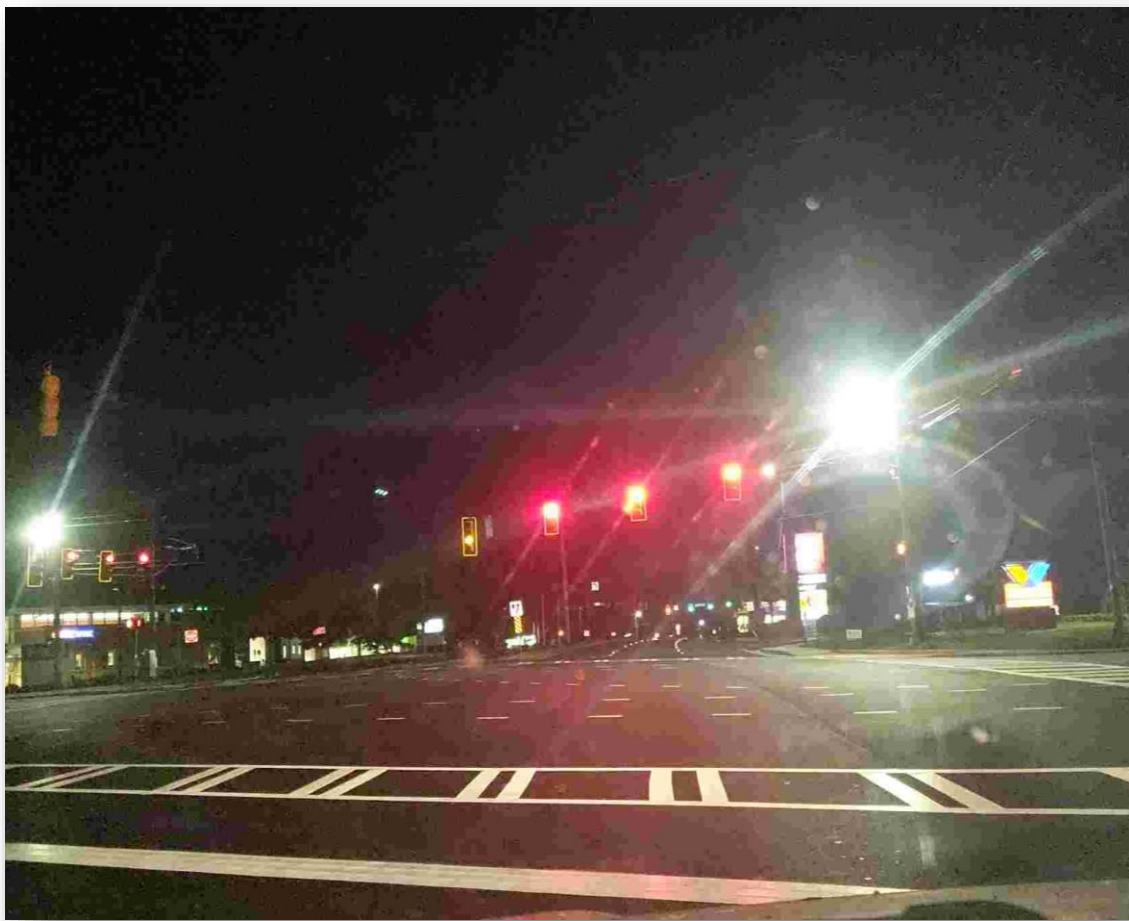
Resurfacing – M006362

on SR 120 from SR 120 Alternate to the Fulton County Line in Cobb County



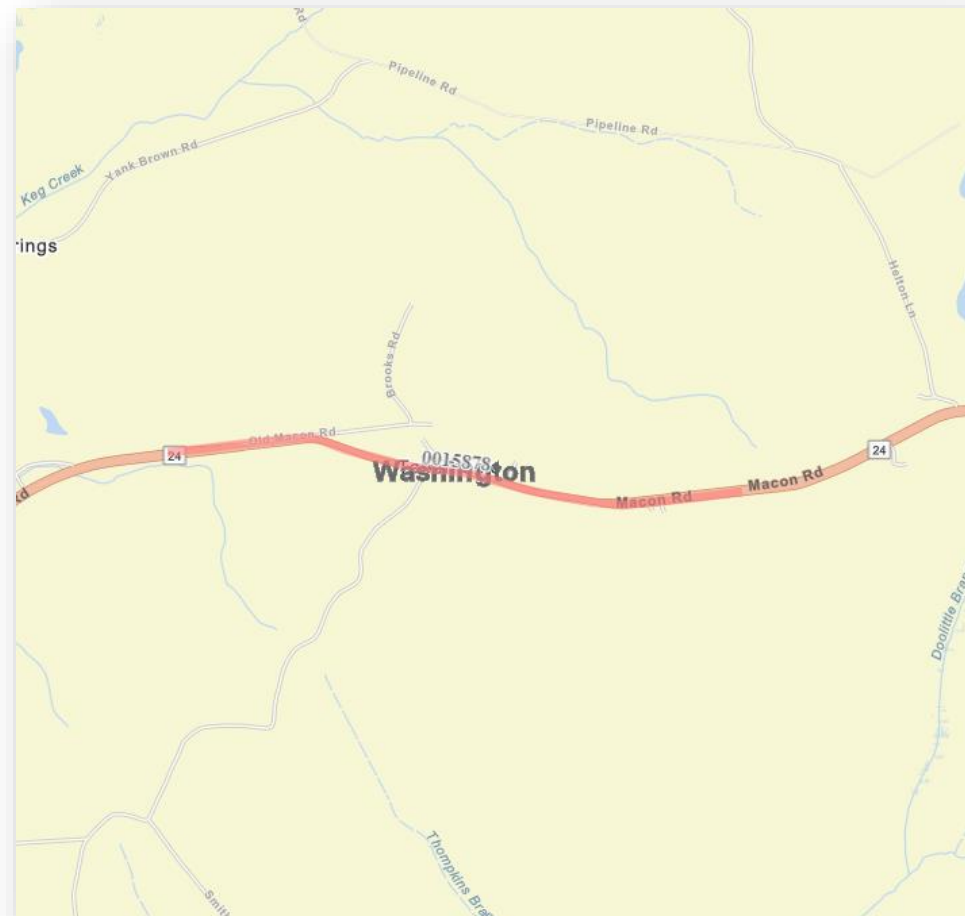
Resurfacing – M006362

on SR 120 from SR 120 Alternate to the Fulton County Line in Cobb County



Widening and Reconstruction – 0015878

SR 24 from east of Chambers Brooks Road to west of Helton Lane in Washington County



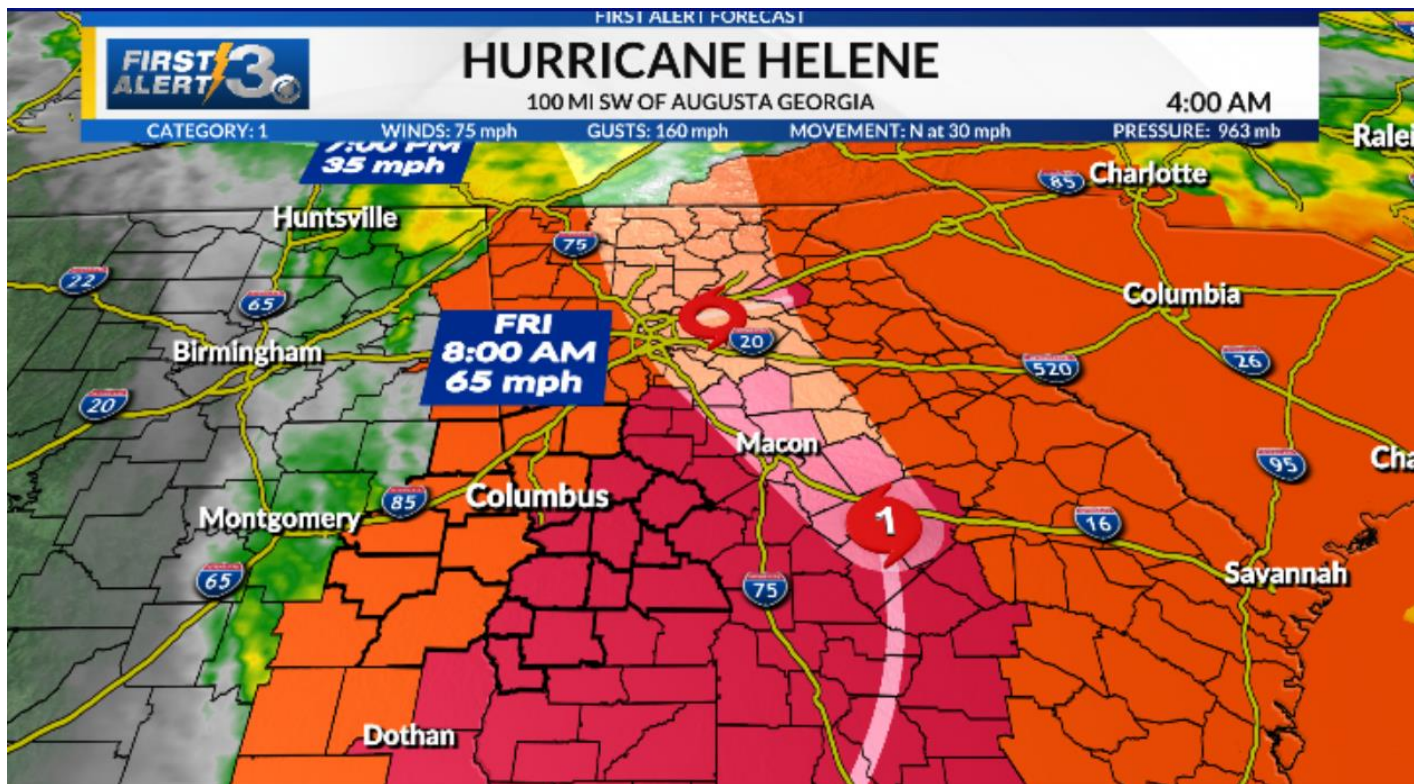
Widening and Reconstruction – 0015878

SR 24 from east of Chambers Brooks Road to west of Helton Lane in Washington County





Hurricane Helene Preparation & Recovery





National Weather Service State of Georgia

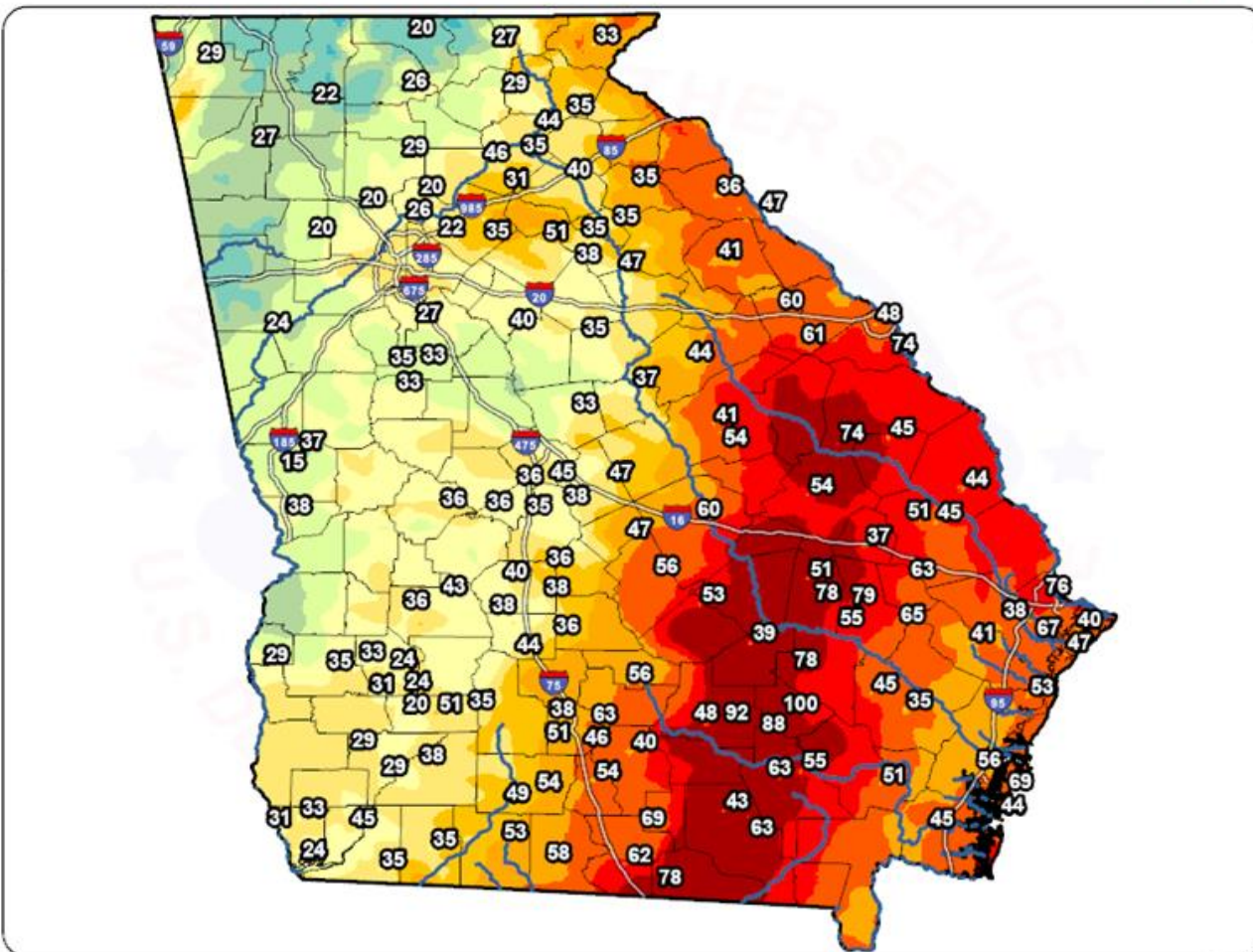
MaxWind Analysis 09/26/2024 07:00AM to 09/27/2024 07:00AM CDT

Analysis Data Source: Real-Time Mesoscale Analysis (RTMA) and Regional Observations



Created:
09/27/2024 03:40PM

Wind Speed (MPH)



This is an experimental product of the NWS GAZPACHO software package. Care should be taken in using the data. Unofficial observations may be plotted. Values at interpolated locations may not represent actual reports at that location.

0 38.75 77.5 155 Miles



Hurricane Helene Georgia Disaster Declaration 10/16/2024

The Georgia Department of Transportation makes no representation or warranties, implied or expressed, concerning the accuracy, completeness, reliability, or suitability for any particular purpose of the information and data contained in this map.

While efforts have been made to ensure that information represented on this map is as accurate as possible, this map represents the best available spatial data as of October 2024.

For additional information or access to the written records, please contact the Office of Transportation Data.

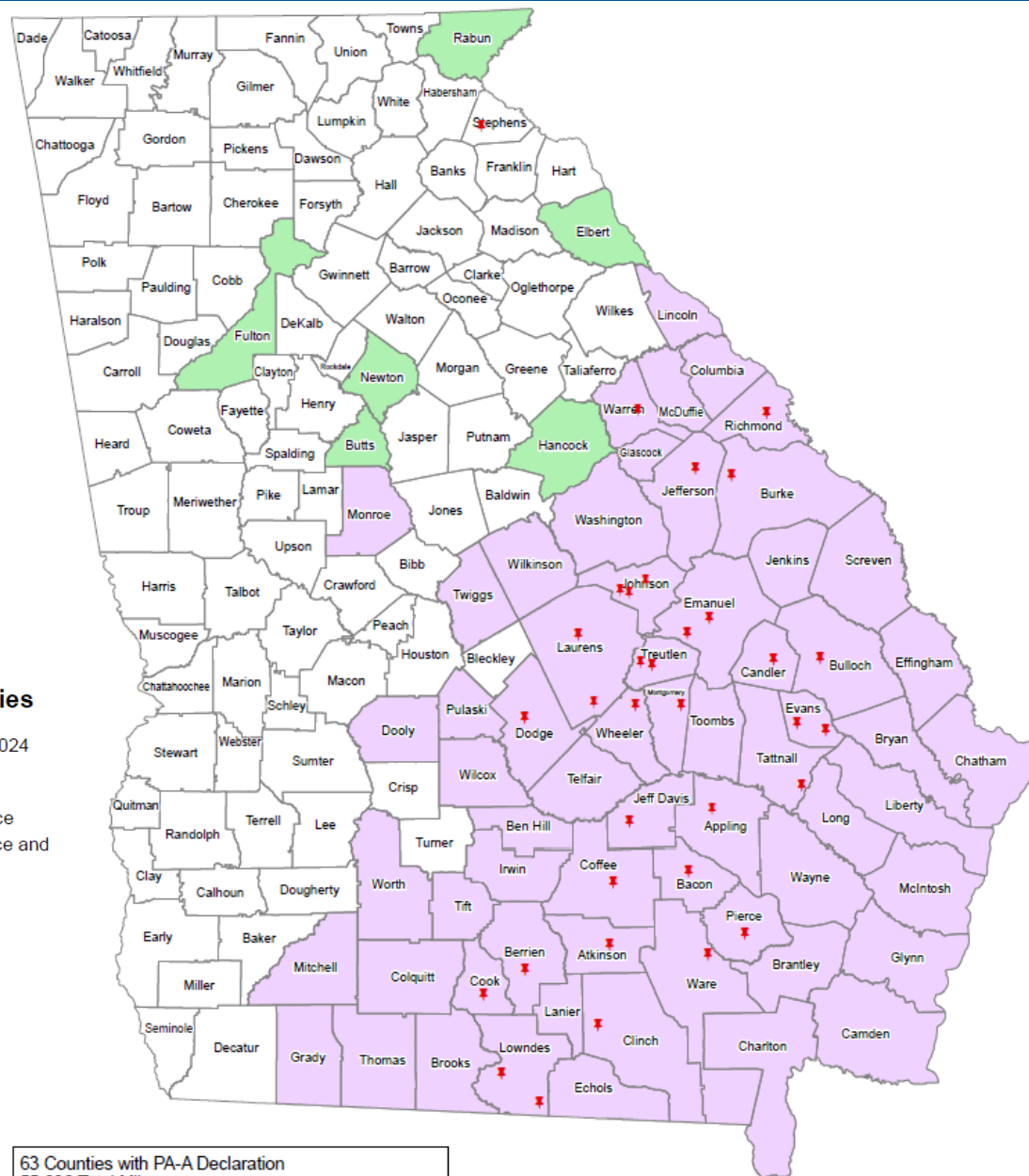


1 inch = 28.41 miles



Designated Counties

-  DMS Sites 10-16-2024
-  No Designation
-  Individual Assistance
-  Individual Assistance and Public Assistance



63 Counties with PA-A Declaration
55,636 Total Miles
9,296 State Miles
46,340 Local Miles
31,023 SQMI Affected out of 59,425 SQMI Total = 52%

Roadway



Signals







Gwinnett – SR 13



Telfair – US 341/SR 27





Signs – Before and After





Messaging



Georgia DOT - Southeast

September 27 at 12:36 PM · 🌐

GDOT crews are currently assessing the damage and impacts to the state's transportation infrastructure caused by flooding, downed trees, and downed power lines.

Motorists are reminded to move over a lane and give our crews space to work.

🔗: <https://mailchi.mp/.../georgia-dot-assessing-damage-of-...>

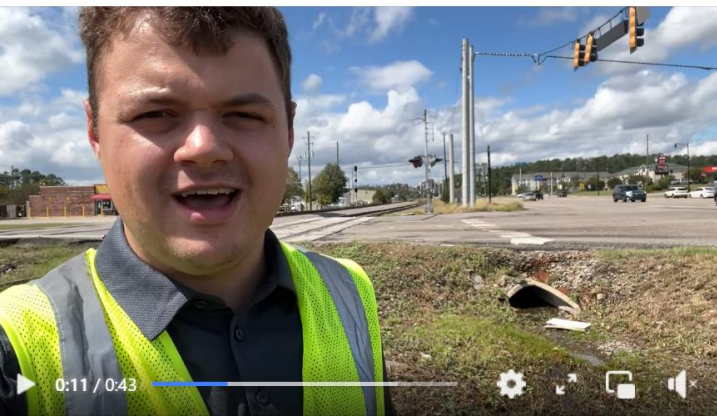
Hurricane &



Georgia DOT - East

September 27 at 1:46 PM · 🌐

Traffic signals are out across the district. We're noticing drivers going straight through the intersection without stopping. Remember — if a light is not working, treat it like a stop sign.



Georgia DOT - Southeast

October 7 at 4:19 PM · 🌐

Our crews are out there working hard to keep you safe! 🚧 Help us protect them by slowing down & staying alert. GDOT is always preparing to ensure Georgians stay safe, no matter the storm.

👉 Visit 511ga.org to report a signal outage.

🔗 [#Hurricanepreparedness](#)



Georgia DOT - East

5 days ago · 🌐

Bye, Bye, Bye, Debris!

Debris removal is underway. Crews are building piles on the shoulder for a Georgia DOT contractor to pick up. We're focusing on interstates first. Crews are working hard for you! Please move over and slow down for them.



PRESS RELEASE

Immediate Release

Tuesday, October 2, 2024

Contact: Nita Birmingham 229.326.5435

District Four Communications



A GDOT equipment operator pushes debris Tuesday to clear the outside lane of SR 32 East in Douglas

GDOT makes progress on hurricane state route recovery

FTON — Less than a week after Hurricane Helene crossed into Southwest Georgia, state routes are passable, just a handful of intersections need repair and debris removal is about to get underway.









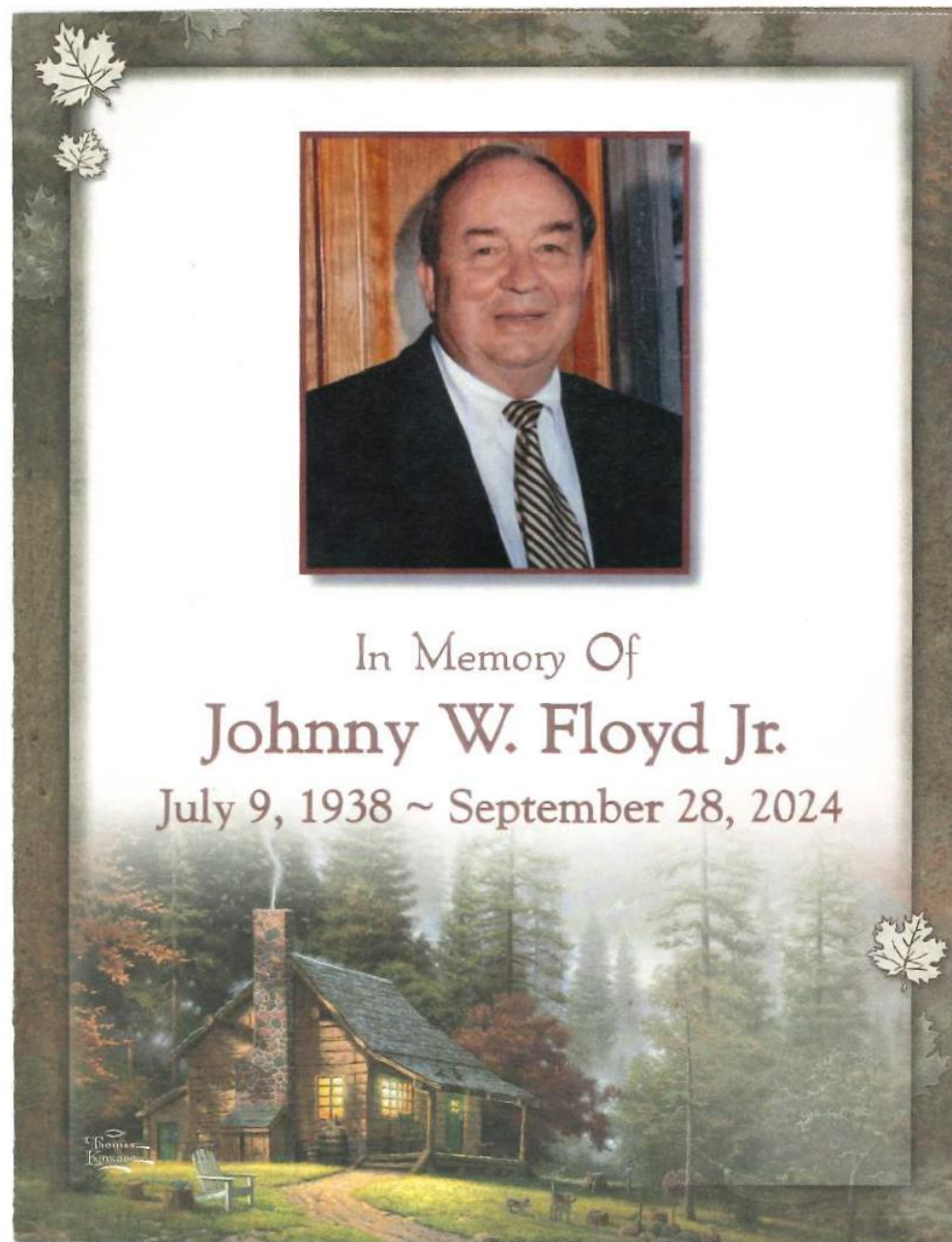








In Memory of Johnny Floyd, Jr.





- ☐ **New Business**
- ☐ **Adjourn**





State Transportation Board Meeting

October 17, 2024